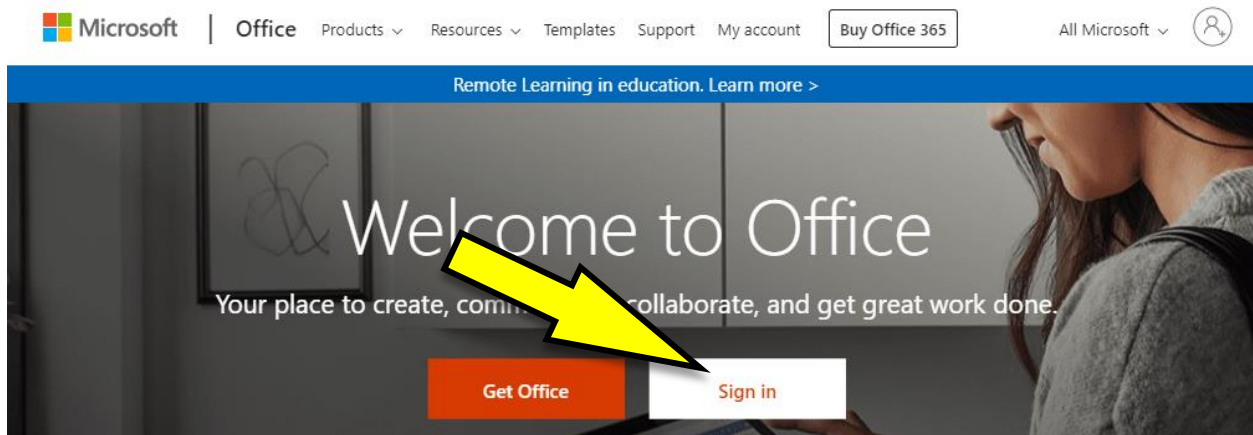


- Access Your Class Team from Home -

Step 1: Open your Internet browser (Chrome, Safari, Internet Explorer, etc.)

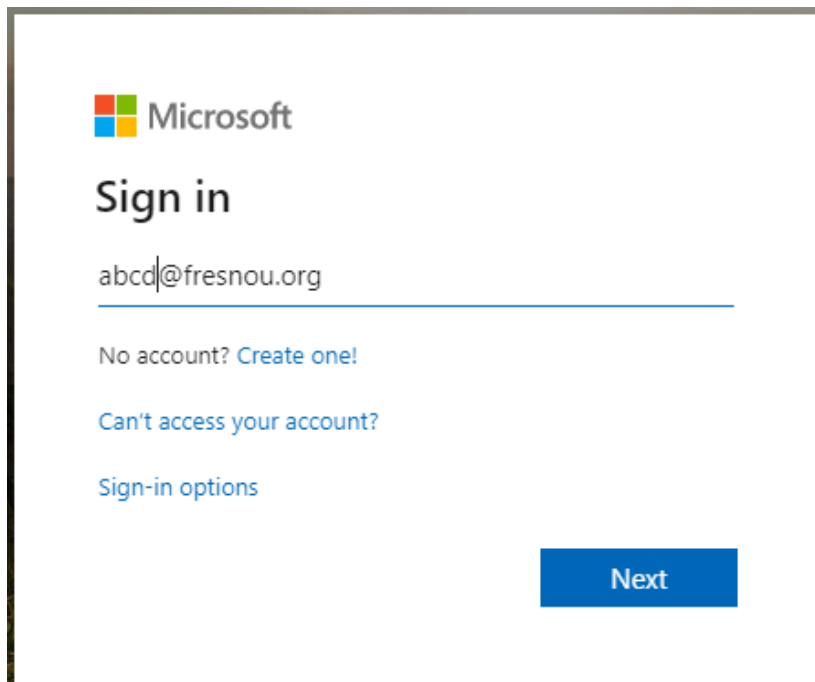
Step 2: Go to office.com

Step 3: Click **Sign In**

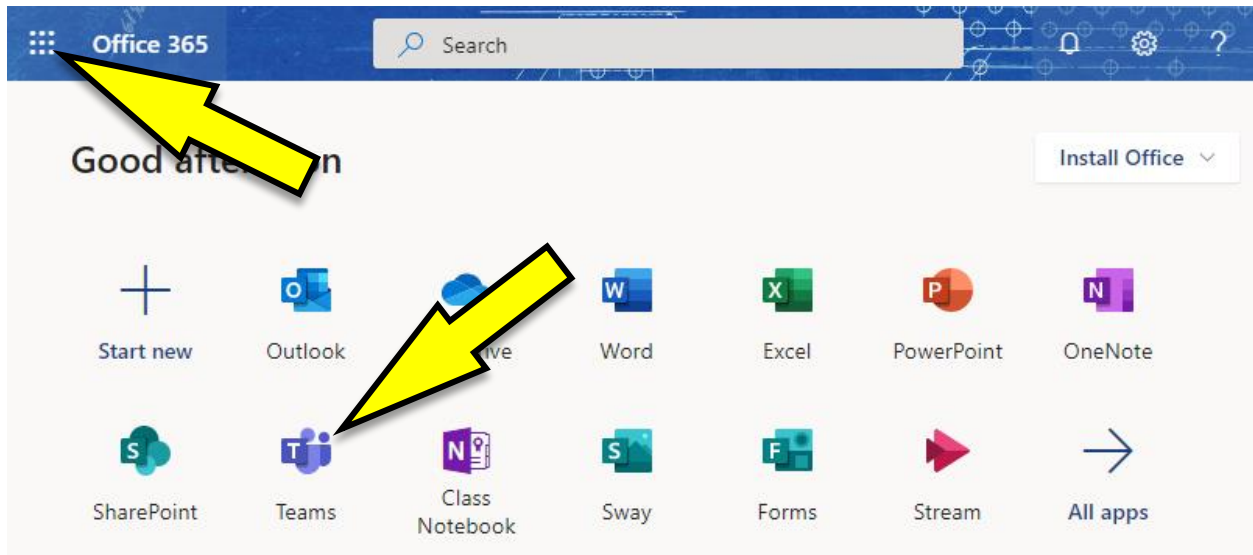


Step 4: Sign in with your school **email address and password**. This is information can be found on the student's report card.

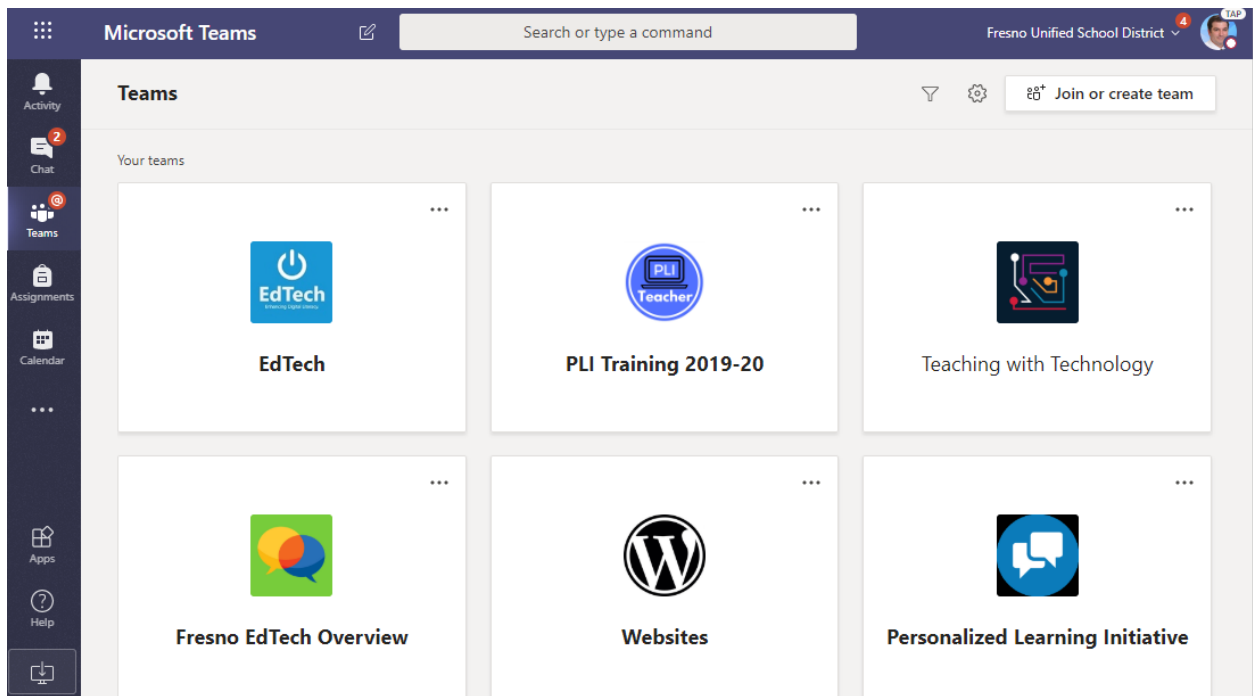
Example: abcd@fresnou.org



Step 5: Click on the Teams icon. You can also click the waffle icon to find it.



Step 6: Click on the appropriate Class Team name.



Click the Help icon at the bottom left to learn more about Teams 😊